

---

**Town Council Meeting on  
September 5  
Open Forum**

---



## *From the Chair*

*By Jeff Swenerton*

**Inside this issue:**

|  |    |
|--|----|
| <i>Help Feed the Animals</i>           | 2  |
| <i>The TECC Office</i>                 | 2  |
| <i>Praying for Rain</i>                | 3  |
| <i>Interpretive Center</i>             | 4  |
| <i>CSA 107 Fire Board</i>              | 6  |
| <i>Fire Department Update</i>          | 7  |
| <i>Fire Department Incident Report</i> | 7  |
| <i>OMWD Update</i>                     | 8  |
| <i>Crime Prevention</i>                | 10 |
| <i>Newsletter Subscription</i>         | 12 |
| <i>Chaparral Advertising</i>           | 12 |
| <i>September Calendar</i>              | 12 |
| <i>West Nile Virus</i>                 | 13 |
| <i>Classifieds</i>                     | 15 |
| <i>Sheriff Dept. Contacts</i>          | 15 |

It seems hard to believe that the summer is passing and we are into September. The potential of another wild land fire in our valleys is certainly a concern for all of us with the dry conditions and the summer heat. It is paramount that we all assess the danger to our homes, have evacuation plans, and provide appropriate areas free of combustible materials to ensure your safety and the safety of our firefighters in the event of a fire.

This past month the Town Council has started two new committees. Both the University Heights Committee, under the direction of Board member Melanie Fallon, and the committee to provide input to the new landowner of the Pecoff Nursery property under the direction of Board member Eric Anderson, began meeting. If you are interested in serving on either com-

mittee, please contact the committee chairperson directly.

### **ELF ALERTS CHANGING TO COMMUNITY ALERTS.**

The Elf Alerts provide a vital communication link to our community on a number of issues. This form of communication, has over the years, informed us of everything from robberies and arson to lost pets and community forums. Officer BJ Williams, Crime Prevention Specialist with our Sheriff's Department believes that the Elf Alerts are one of the reasons that we have a very low crime rate. When something happens all eyes of the community are at work immediately to apprehend the person and prevent further crime in the area. Information on crimes and security are important to both Elfin Forest and Harmony Grove. So that the perception is not that

the alerts are only important to Elfin Forest we are changing the name to Community Alerts. Most threats to us transcend both communities and a response by everyone is most effective. At this point many of our Harmony Grove residents and some of us in Elfin Forest do not receive Alerts. The Town Council's goal is to have everyone receiving Community Alerts. If you are not signed up, please e-mail Karen Gardner at [Karen@vintagematerialism.com](mailto:Karen@vintagematerialism.com).

### **SEPTEMBER MEETING TO FOCUS ON OPEN FORUM.**

Earlier this year we had a meeting with no formal presentation, allowing the committee chairs time to give detailed reports from each of our committees. Because those in atten-

## *From the Chair (continued)*

dance had the opportunity to ask questions and provide input into the committees they felt it was a very informative meeting. Our September

5th meeting will be an Open Forum format and the Town Council Board will provide reports from each of our committees including University

Heights, the Bridges and the Fire Department. The meeting will end no later than 9:00. Please plan to attend.

## *Help Feed the Animals*

For more information go to:

[www.animalcenter.org](http://www.animalcenter.org)

Hi, My name is Brianna Jakawich and as a Community Service Project, I am helping Helen Woodward Animal Center's Animeals program to provide weekly deliveries of pet food to seniors and people with disabilities who are unable to leave their home to purchase food for their pets.

You can help by either making a donation of canned or bagged adult dog or cat food or you can write a check made payable to Helen Woodward Animal Center. Please mail the checks to me at this address:  
Brianna Jakawich  
7051 Elfin Oaks Rd.  
Elfin Forest, CA 92029

You can drop off pet food at the same address in the bin by the front door. Donations will be accepted from now until Sunday Sept. 16, 2007. All donations are tax deductible.

Thank you in advance for your support of this very important program.

## *The TECC Office*



Eric Anderson welcomes Geoffrey Smith and TECC to their new office at Anderson's SeedCo. in July 2006

Since July 2006, The Escondido Creek Conservancy (TECC) has operated out of an office located at Eric Anderson's Seed Company nursery, at 20253 Elfin Forest Road. Perched high on a hill overlooking Elfin Forest, staff and volunteers get a lot done in this little

place! Our 8' x 20' module trailer houses two work areas, as well as materials, files and supplies to support our program of preservation, restoration and protection of the natural open space with the Escondido Creek watershed. You are invited to stop by any time to visit

-- or to volunteer at some of the dozens of fun projects that await your arrival. Give us a call at 760.471.9354 (direct office line), or email [information@escondidocreek.org](mailto:information@escondidocreek.org). We look forward to seeing you!

*By Geoffrey Smith*

## Praying for Rain

As September approaches, traditionally bringing, toward the end of the month, the start of our “second spring”, we have to remember what Al Gore calls “an inconvenient truth”, which is global warming. What this means to us is that planting we may typically have done in September might be postponed until early or mid October. Looking at the long range weather forecast we see that little rain is forecast for September and October. That’s bad news for newly planted items which will do much better when watered with rainwater. (No offense, OMWD.)

So, whatever Higher \_\_\_\_\_ you believe in or not, it’s definitely time to start praying for rain in the right amount, at the right time. The earth is so parched that it has started to develop fissures in some areas. The drought and warming trends are not just here in Southern California. I recently returned from judging for the Communities in Bloom program in England, Scotland, Ireland and Canada. In Newfoundland, they haven’t seen

an iceberg in years. In Toronto, the park staff is extending the season for the gardening staff by two months – one month each in spring and fall because it is warmer than ever. In Petrolia, Ontario, the corn crops were stunted and will probably be lost. In England, lawns were dry and there is a tremendous move to using rain barrels to catch every bit of moisture and reuse it in the garden. Porous pavement has become an important component in new construction to allow rainwater to recharge the soil instead of running off into storm sewers. In Shrewsbury, England, the new town greenhouses capture and retain all the rainwater from the roof and store it in a tank, then use it for irrigation.

In Brampton, Canada, soccer pitches for youth programs are being built indoors, using artificial turf, as the drought precludes outdoor playing fields from being used. Everywhere I traveled in Europe, schools are teaching environmental responsibility using the Green Flag program. Beaches are rated for

cleanliness and water quality with the Blue Flag program. Even churches are doing their part for environmental awareness and stewardship of the earth with their own initiatives. Each town I visited was doing massive tree plantings wherever possible, and in Strathcona County, Alberta, there is a huge voluntary movement by residents to put conservation easements on their land to create a large greenbelt that can never be developed.

In my travels I saw communities smaller than Elfin Forest who were committed to reducing their “carbon footprint”. Some of their initiatives via community leadership and city councils include planting trees and flowers which help clean the air and make their community more attractive at the same time, demonstrating the pride these people have in the place they call home. We can learn much from them.

*By Evelyn Alemanni*



### Web Sites of Interest

#### Long range weather forecast:

[www.dryday.com](http://www.dryday.com) or  
[www.almanac.com/  
weatherforecast/us/16](http://www.almanac.com/weatherforecast/us/16)

#### Green Flag Program:

[www.greenflagschools.org](http://www.greenflagschools.org)

#### Blue Flag Program:

[www.blueflag.org](http://www.blueflag.org)

#### Church related environmental stewardship:

[www.ecocongregations.org](http://www.ecocongregations.org)

## *Elfin Forest Recreational Reserve Nature Interpretive Center Update*

The Elfin Forest Recreational Reserve Nature Interpretive Center project has reached an important milestone, with the selection of a final design concept by artist James Hubbell and his architect son Drew Hubbell. This innovative 'living roof' design will incorporate earth-friendly components including passive air conditioning (there will be no hook up to SDG&E); photovoltaic solar; and a 'living roof' -- flat roof with plants on the top and sides. Full architectural plans are expected by the end of this year. Very exciting! This roundish building (the Hubbells don't make anything with a straight line, nor does Mother Nature) will be approximately 1,000 square feet in size, and situated within the 'corral' fenced area at the EFRR parking lot staging area. The fundraising Capital Campaign has achieved funding of just over \$300,000, with a goal of \$600,000. You can help! **Please consider a significant contribution** to support this important community resource that will serve

our educational needs for generations to come. Contact the TECC office at 760.471.9354 or [information@escondidocreek.org](mailto:information@escondidocreek.org). Visit the web site for complete details at [www.escondidocreek.org](http://www.escondidocreek.org).

The Hubbells described their design philosophy with these words:

"We have tried to create designs for the Interpretive Center that reflect the learning process-- how it emerges from the unknown and grows as something that sparks our curiosity and encourages us to spend time with it, to learn more about it. Through the use of curved walls, unique forms, and a visual connection to nature, we have tried to create a building that fosters the relationships between the unknown, curiosity, discovery, and knowledge.

Our designs focused on features that would: 1) tell the story of the creek and be sensitive to the site; 2) bring the outside indoors and create outdoor areas that function like indoor space; 3) inspire curiosity, discovery, and a connection to

the Preserve; and 4) incorporate building elements that would provide interpretive learning opportunities.

### Location & Orientation:

We have located the building in the footprint of the existing interpretive sign. We feel it should be oriented away from Harmony Grove Road with the main entrance, windows and patios on the south side facing the creek. By orienting the building toward the hills, creek, and hiking trails, we create a connection to the preserve and make nature the focal point. The southern orientation also works as a key element in passively heating and cooling the building, and for locating the photovoltaic panels.

Visitors would enter the Center from the southeast side, providing opportunities for them to experience nature and relate to the site while walking to the building.

### Indoor / Outdoor Space:

Since the main function of the building is to interpret the nature outside, we would like to extend the Center's space outdoors as much

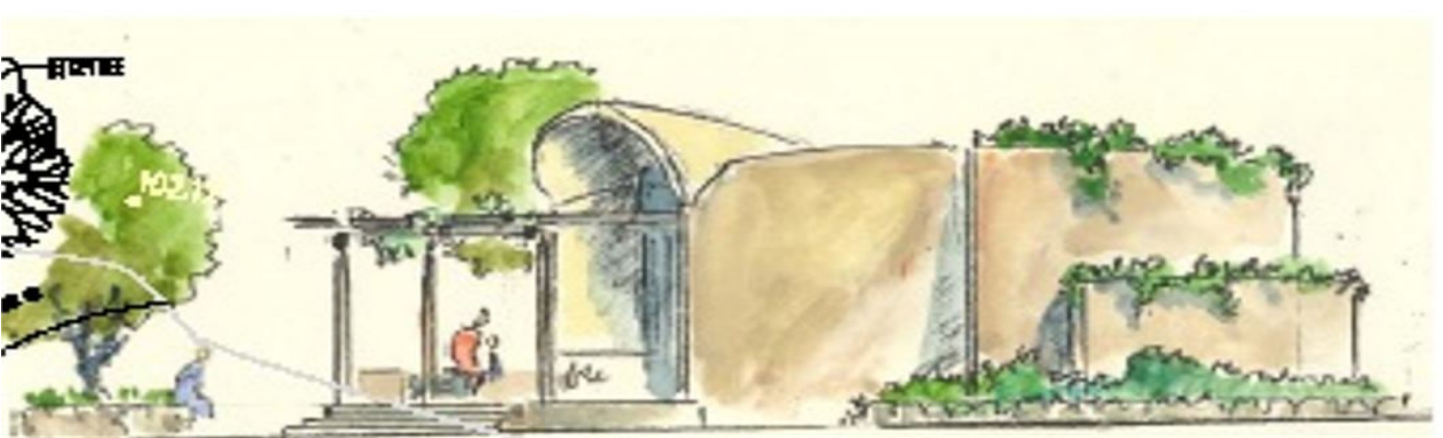
as possible. The 1,000 square-foot indoor space flows to an outdoor porch area covered by a wood trellis, creating an "outdoor room" with views of the preserve. This outdoor area offers additional space for meetings, group events, or fundraisers. We see this porch as a shady place for children to sit outside, looking toward the hills, while the ranger presents an educational program. It would also be a pleasant place for meeting overflow, resting, or relaxing while others go for a hike; and it would be available even if the center is closed.

We propose low stone wall seating around adjacent site trees to provide additional resting areas.

The trellis, possibly made of reclaimed timber, offers shade and a place for photovoltaic panels and plantings.

### Incorporate Existing Vegetation into Design:

We believe it is important to consider the whole site in the design, not just the building. To help create a feeling of a quiet retreat, the existing trees on the southeast portion of the corral, have been incorpo-



rated into the design. They function as a living screen to block the view to the parking area and also help provide shade. Replacement trees for the oaks could be planted in small 18-inch stone walls where people can sit. We would slope the site to drain toward the existing and proposed trees, providing natural rainwater catchment. We would also like the design to feature the sycamore (which is currently fenced off) across the road. This tree will be undisturbed in the building process.

### **Common Design Features (continued)**

**Flood & Fire:** The building site is within the County's 100 year flood map created in 1980, prior to the site being graded. The building pad will be raised 12 inches above the existing grade. Moisture-resistant recycled polystyrene materials are proposed for the building

structure; these are sprayed with concrete and finished with plaster, providing a durable, low-maintenance building. The structure will incorporate fire-resistive materials and building practices.

**Energy:** The trellis serves as a place to locate solar panels along with providing shade. The trellis and photovoltaic panels can be installed in later phases as funding allows.

**Passive Systems:** All options show an overhang for the southern windows. This helps reduce the amount of solar energy hitting the window, so it will reduce the required cooling load of the space. The operable skylight, windows, and clerestory all provide natural daylight and open for natural ventilation. The polystyrene materials provide super-insulated walls, helping mitigate the need for heating and cooling.

Once an option is selected, we will propose additional passive elements appropriate to that design concept.

**Building Security:** Planning for security and vandal-resistance are key elements. Roll down doors or doors pivoting in the center limit access through the main entrance. The design allows for standard roll down doors to be incorporated. Door and window openings will be made of thick Plexiglas. The pivoting entry doors can contain displays that help tell the story of the place.

**Budget:** The current budget will allow for a simple shell structure to be built. The designs will allow for phasing so elements such as photovoltaic panels, and landscaping can be added as future funds become available.

### **Living Roof**

Raised planters around outside walls provide

additional insulation and make the structure feel more like a part of the land. A living roof with low-water-use plantings is proposed so the building visually blends into the site.

Two slot windows in the rear wall and an operable skylight help provide natural ventilation.

The roof is vaulted to the south, assisting in natural daylighting and passive heating and cooling.

**Construction:** Perform Wall (super-insulated concrete form) with plaster skin; CMU Block retaining walls below grade.

**Benefits:** Simple (easy to build) shell; secure, no openings on the north side facing road; more wall space for exhibits."

*By Geoffrey Smith*

## *Elfin Forest/Harmony Grove Fire Department, County Service Area 107*

The Elfin Forest/Harmony Grove Fire Department, County Service Area 107 elections are quickly approaching. Each election year, your Board of Directors wonders if anyone in the east or northeast part of the CSA will run for the board of directors. The eastern part of the CSA encompasses the Harmony Grove area. The northeastern part of the CSA encompasses the Coronado Hills area, the Attabury area and upper Qwesthaven. Your Board of Directors

can count on TWO fingers the number of board members that have resided in areas other than Elfin Forest. Jim McKim and Rosemarie Kerr of Harmony Grove are the only two residents, in my 20 something years on the board, to serve. Jim served many years as a board member. Your Board of Directors would like to thank Rosemarie for her one year of service as the Alternate Board member, which runs through October 8 of this year. Your Board of Directors

has been discussing the various aspects of creating a geographically diverse board. How should we divide up CSA 107 for better representation? Should the board composition be based on geography or population or both?

The new residents of the New Urban West – Harmony Grove Village will more than double the population of CSA 107. Take a moment to think about this. In our current election process, this means that when the New Urban West - Har-

mony Grove Village is built, in two election years, the new residents could replace all current Board members.

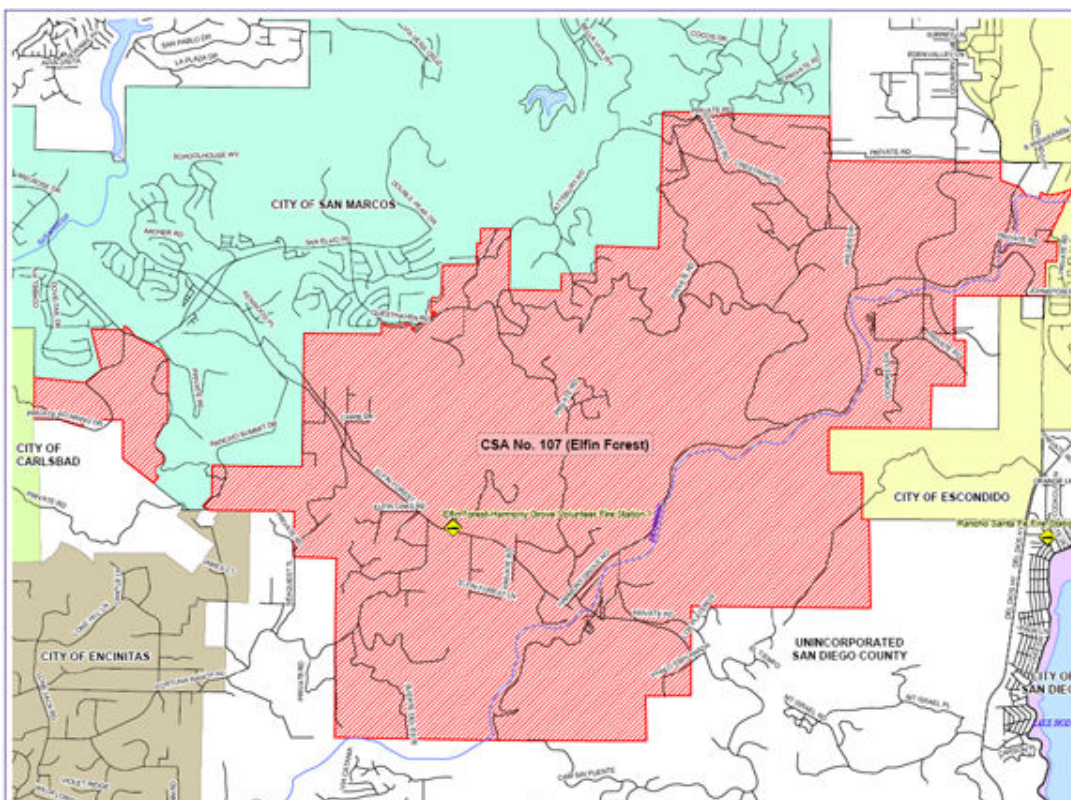
So how does your Board decide how to diversify representation? Should the bylaws be changed? Should we take a map and divide it into four quadrants to be represented by two board members?

What if no residents from a particular geographic area want to serve? Does your Board of Directors need to change the election process? Do the current residents even care?

And so your Board of Directors continues to wonder who will represent their region on the board?

If you'd like to help your board make this major decision, please place your name on the ballot. Your current Board of Directors needs you.

*By Nona T. Barker*



## *What's Happening at the Fire Department—September 2007*

You may have driven by the station and noticed some spring cleaning going on. Chief Heiser and the Facilities Committee are hot to trot working on the new locker room. If you remember, we received a grant from Fireman's Fund Heritage Program to complete the build out of the new locker room and workout room. The Health and Wellness Committee has gone as far as they can go without the workout room completion. And it all hinges on the completion of the locker room. So...a few strategically placed burrs under the saddle and we are off to the races. Everyone is working hard and excited to see this project moving forward.

We have been informed of an award of \$14,006 SAFE (San Diego Authority for Freeway Emergencies) grant for a second Thermal Imaging Camera. In other grant activity, we've applied for a new type of 800MHz radio that is P25 compliant through State Homeland Security. P25 is the latest

technology that will enhance communications interoperability between all the different agencies that would be involved in a disaster response. And we also submitted an application for another \$25,000 from the San Diego Fire Foundation towards the new BLS ambulance. Slowly but surely, we're getting there!

Training for all of August and September is focused on pump operations and hydraulics. We have some Driver Operators working towards the rank of Engineer, and the Chiefs are going to put them through some rigorous training and testing. It will also allow the Firefighters to get some much need nozzle time, because if the Engineers and Driver Operators are going to flow water, they need someone to man their hoselines. Should be great training for all and we are really looking forward to it.

We would like to officially welcome aboard Probationary Firefighters Ryan Works and Joe Ekblad. An OMWD

Ranger, Ryan had to recert his EMT and is now officially on with us. Joe is a CDF Firefighter who participated in our Confined Space Rescue Operations class. He got to know us and decided he wanted to be a part of this great organization. Also, welcome back to Firefighter Ryan Parker, who has returned now after completing Medic school. We are thrilled to have all this new blood.

As you may have noticed, the weather is getting hotter and dryer. Although it felt unbearable, that monsoonal moisture we experienced in July and August helped keep the fires down. But it's really warming up. Keep an eye out, day and night. Report any suspicious activity to the Sheriffs non-emergency number 760-510-5200. If you see smoke or fire, call "911"...that is the quickest way to launch all the resources we need for a wildland fire response.

*By Battalion Chief  
Dawn Pettijohn*

## ***Fire Department Incident Report— July 15th through August 15th.***

|      |  |
|------|--|
|      | <i>Tree down blocking Elfin</i>                        |
| 7/18 | <i>Forest Road</i>                                     |
|      | <i>Residential Fire Alarm -</i>                        |
| 7/21 | <i>Fortuna Del Sur</i>                                 |
|      | <i>Snake Removal - Elfin</i>                           |
| 7/24 | <i>Forest Road</i>                                     |
|      | <i>Child Fall/ not from height</i>                     |
| 7/24 | <i>- Fortuna Del Norte</i>                             |
|      | <i>Smoke investigation -</i>                           |
| 7/26 | <i>Camino Cielo Azul</i>                               |
|      | <i>Residential Fire - Elfin</i>                        |
| 7/27 | <i>Forest Road</i>                                     |
|      | <i>Smoke Investigation - Harmony Grove and Country</i> |
| 7/28 | <i>Club Roads</i>                                      |
|      | <i>Heart Problems - Fortuna</i>                        |
| 7/28 | <i>del Este</i>  |
|      | <i>Overdose - Harmony Grove</i>                        |
| 7/29 | <i>Road</i>  |
|      | <i>Vehicle Accident - Elfin</i>                        |
|      | <i>Forest and Harmony Grove</i>                        |
| 7/30 | <i>Roads</i>   |
|      | <i>Snake Removal -</i>                                 |
| 7/30 | <i>Questhaven Road</i>                                 |
|      | <i>Heart Problems - Fortuna</i>                        |
| 8/2  | <i>del Este</i>  |
| 8/3— |  |
| 8/15 | <i>No Calls</i>  |

## OMWD Update

OMWD directors and staff are dealing with several hot topics that I thought you should know about:

1. **The Delta:** Our water comes from two separate sources: northern California and the Colorado River. The amount from each source varies. As drought continues to attack the west the Colorado River yields less and less. The water we receive from northern California has to travel through a maze of channels or levees that look like little raised islands from the air. This area is called the Delta. Once through the Delta the water travels through pumps then through open canals as it flows by gravity through the middle of California. You can see these canals full of water if you drive along Route 5 between the Grapevine and Sacramento.

The Delta is an extremely environmentally sensitive area. Many species of fish and wildlife live in the Delta. Some of the species are on the endangered species list and are pro-

tected. There are times when these species are caught in the pumps and are inadvertently killed. In order to lessen the killing the state has a system where refrigerated trucks go to the pumps and collect these endangered fish before they are harmed and ship them to safer areas.

In July, for the first time ever, the pumps were shut down for ten days while the fish were in particular danger. We lost half of our water supply for ten days. I foresee this happening more regularly in the future.

This is why I am puzzled why Governor Schwarzenegger and Senator Don Perata would suggest that the Governor's bond, of which half of the \$5 billion would be for two dams, would locate both these dams north of the delta. It's curious, isn't it? How does this help southern California exactly? Wouldn't it be better to locate the dams south of the delta? (And, by the way, does it have to be dams? Why not groundwater basins? Just a thought...)

2. **Prop 50: The Water Bond:** Prop 50 was passed by the voters and \$3.8 billion was allocated to clean up the environment, specifically watersheds. Prop 50 mandated that in order to get any of the money you have to have an Integrated Regional Watershed Management Plan (IRWMP) in place and approved by the Department of Water Resources. In some areas of the state IRWM planning has been a fact of life for years. In San Diego County we have no such plan.

San Diego County has nine hydrologic units (or eleven, depending on how you define a hydrologic unit). For example, Escondido Creek is a watershed and is part of the Carlsbad hydrologic unit.

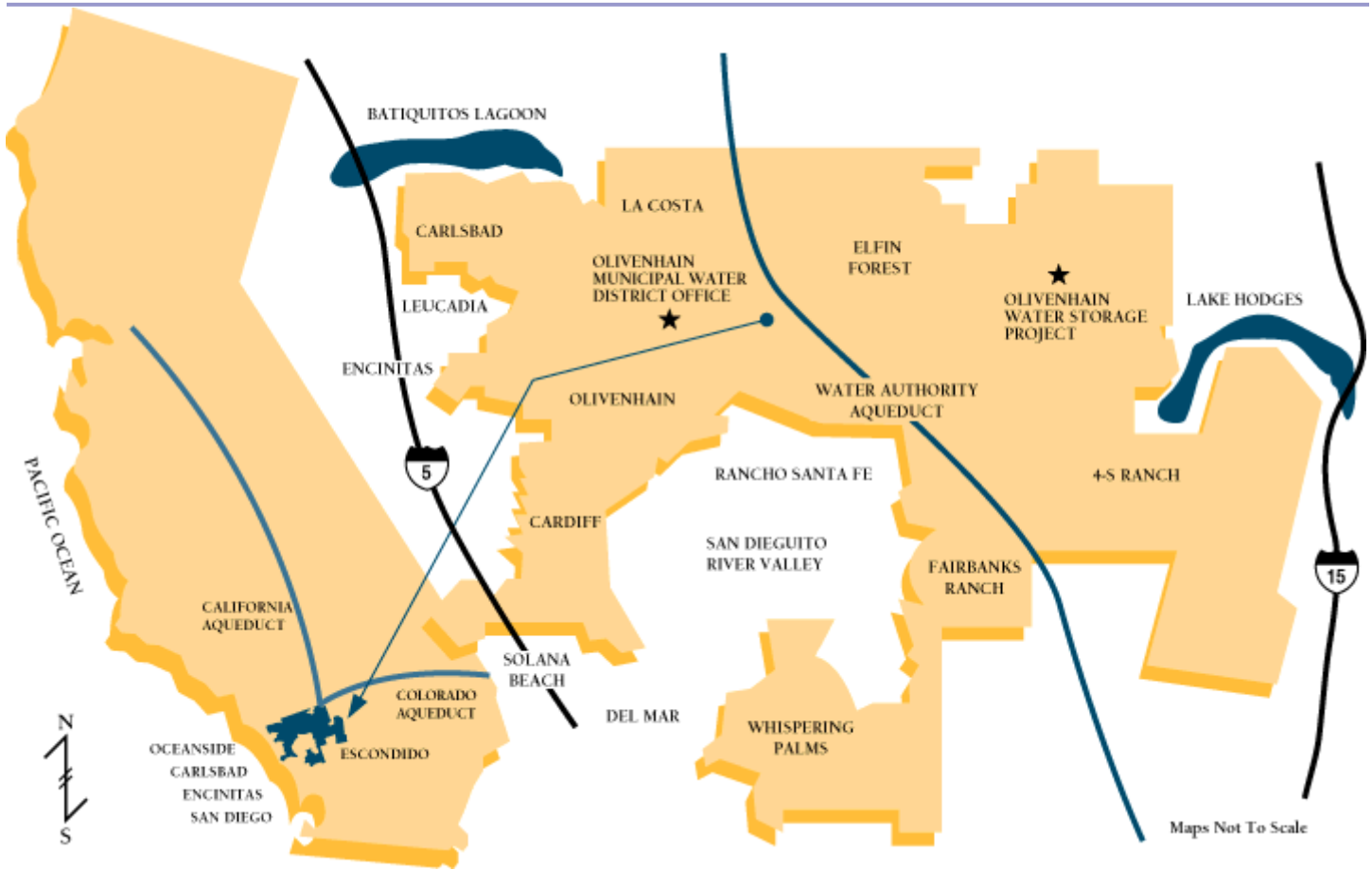
In other areas of the state IRWM plans ask: "What can we do to make the watershed better, safer, cleaner?" Since we in San Diego County have no history of watershed management we are way behind in being able to claim any of the bond money. So San Diego County Water Authority, the City of San Diego

and the County of San Diego formed an "MOU Group" to put together a plan and get some of this bond money. They put up almost \$1 million to hire consultants who authored a 700 page IRWM plan. Billions of dollars worth of projects were submitted, most by the MOU Group themselves (is this conflict of interest? or a just return on the \$1 million?).

Since the planning process is so new and the time to be able to claim the money so short, the MOU Group decided that they were not going to look at the question "What can we do to make the watershed better, safer, cleaner?". They are asking the question "What can we do to make the County better, safer, cleaner?". I oppose this change in the long term (although I understand the reason for doing this in the short term). Some of the projects that the MOU Group submitted will benefit more people, for example conservation projects, but are we serving the will of the people if we lose a watershed?

3. **Lake Hodges:** San Diego County Water Authority is in the process of





building a pipeline between the Olivenhain Dam and Lake Hodges. It is due to open in December, 2008. This project was envisioned to be able to put water into Lake Hodges and therefore store more northern California/Colorado River water, keep Lake Hodges fuller no matter what the rainfall, keep Lake Hodges cleaner, and generate \$4 to \$5 million a year in electricity by letting the water gravity flow from the Olivenhain Dam into Lake Hodges during the day and pumping it back at night when the electrical rates are cheaper.

However, recently Lake Hodges has been listed as an impaired body of water. This means the Olivenhain Dam, which is full of pristine northern California/Colorado River water will be contaminated by Lake Hodges water. Our treatment plant was not built to treat this kind of pollution. We may have taste and odor problems. We are trying to negotiate with San Diego County Water Authority and I will keep you informed as it plays out.

**4. Fluoridation:** Water agencies in San Diego County have not put fluoride in the water in

the past. On October 1, 2007 our wholesaler San Diego County Water Authority (CWA) will begin adding fluoride in their water. Since not all OMWD customers receive this water we will begin adding fluoride to our treatment system to ensure consistent outflow to all customers. We were not given a choice. CWA is mandating this change. You may want to talk to your dentist about whether fluoride treatments are still needed for your kids.

**5. Conservation:** Last year San Diego County received 3 inches of rain, normal rainfall is 10 inches. While the Oliven-

hain Dam shelters us from dramatic fluctuations in water use the staff at OMWD is still worried about the long term affects of a prolonged drought. We will be rewriting the Drought Management Plan in the next few months and possibly including an emergency drought pricing schedule. I am replacing a lot of my lawn with drought tolerant plants and I love the effect, especially when I get my monthly bill. I also inspect my irrigation system regularly because the coyotes love to bite the

## OMWD Update Continued



pipes to get to the water.

6. **Elfin Forest Recreational Reserve:** The Interpretive Center is in design and is a very exciting project for the park.

OMWD received some grant money but we are also looking for help from the community in the form of donations. I have challenged OMWD staff and directors to help and now I

would like to ask you to consider donating to this very worthy project. (See page 4 of this newsletter for information on the center.)

OMWD received a grant from the state and built a new bridge across the creek at the park. The park should be able to remain open for more days during the winter when the

creek is flowing. We will be dedicating the bridge on Saturday, August 25<sup>th</sup> from 9:00am so come out and join us!

If you have any questions, please don't hesitate to contact me: 760-471-7786.

*By Susan Varty*

## Crime Prevention

### What is Crime Prevention?

Crime Prevention is everyone's business because it affects everyone! How can we quantify that crimes have been prevented? It is difficult in a statistics driven environment that tracks the number of crimes, although it is usually measured when crime goes up or down. Concentrated efforts to reduce crime can be very effective. There are several measures that can be taken to improve security, promote safety, and increase awareness. "Crime Prevention Specialists assist residents in formulating and implementing

strategies that can make them less likely to be a victim of crime, whether in the home, walking on the street, traveling in a car, going shopping, or working at their place of business."

### What can you do to prevent crime?

Lock all windows and doors in your home and vehicles even when you are away for a few minute.

Check conditions when alarms are activated.

Be aware of your surroundings and who is nearby.

Help organize a Neighborhood Watch, Business Watch, Apartment Watch,

or Ranch Watch in your neighborhood.

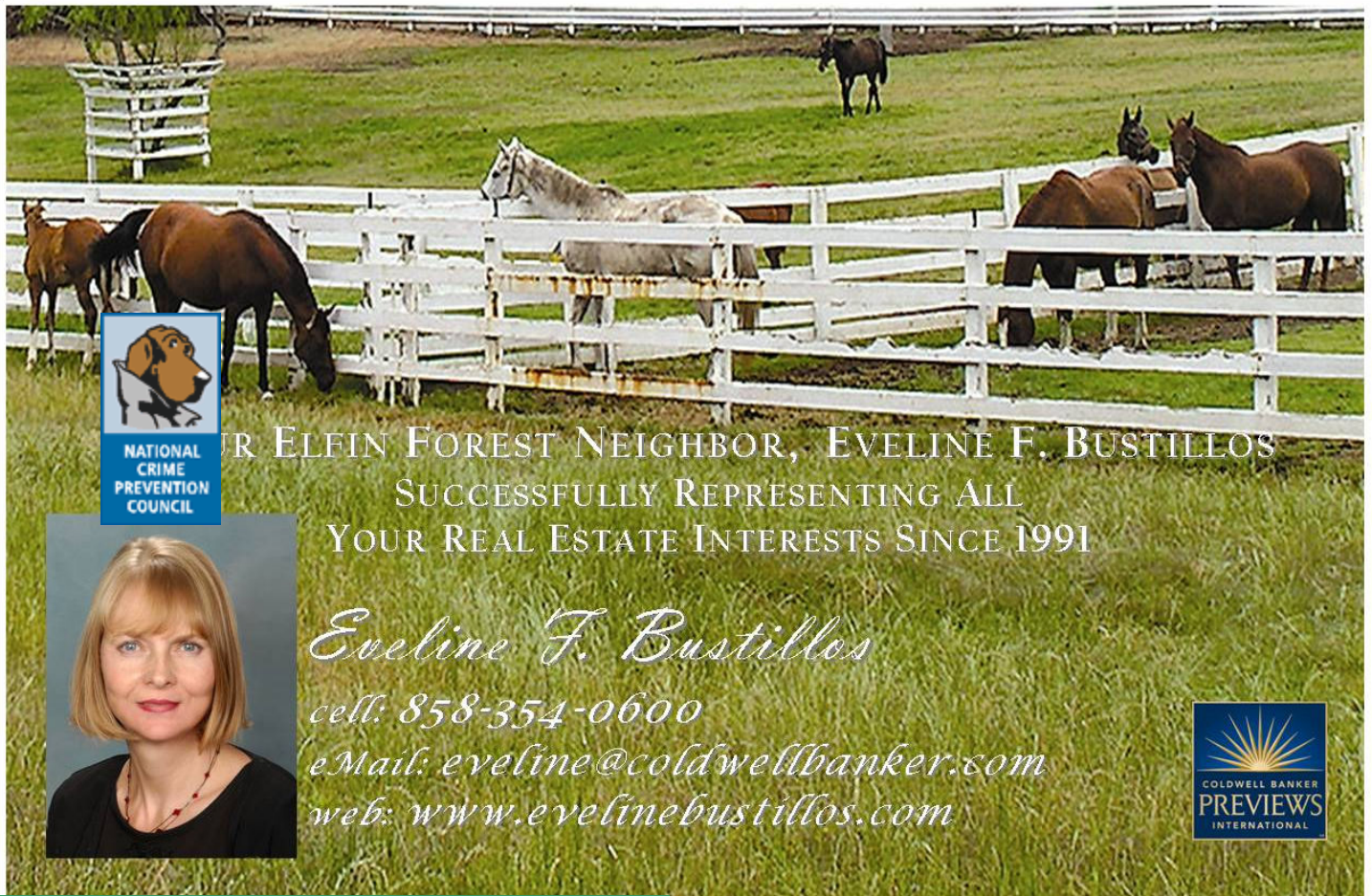
Participate in neighborhood activities and teach your children the value of contributing to their community.

Take advantage of FREE Crime Prevention Services:

- Security Consultations
- Community Forums
- Children and Adult Personal Safety Presentations
- Safety Fairs

*By BJ Williams*





NATIONAL  
CRIME  
PREVENTION  
COUNCIL

FOR ELFIN FOREST NEIGHBOR, EVELINE F. BUSTILLOS  
SUCCESSFULLY REPRESENTING ALL  
YOUR REAL ESTATE INTERESTS SINCE 1991

*Eveline F. Bustillos*  
cell: 858-354-0600  
eMail: [eveline@coldwellbanker.com](mailto:eveline@coldwellbanker.com)  
web: [www.evelinebustillos.com](http://www.evelinebustillos.com)

COLDWELL BANKER  
PREVIEWS  
INTERNATIONAL

## Need a Website?

**Call for a free consultation.**

Check these samples of our recent work:

- [www.plantplants.com](http://www.plantplants.com)
- [www.sunshinegardensinc.com](http://www.sunshinegardensinc.com)
- [www.sdhortsoc.org](http://www.sdhortsoc.org)
- [www.andersonslacostanursery.com](http://www.andersonslacostanursery.com)
- [www.plantsbyseason.com](http://www.plantsbyseason.com)
- [www.elfinforestgardens.info](http://www.elfinforestgardens.info)
- [www.coburntopiary.com](http://www.coburntopiary.com)
- [www.elfinforestcommunityfoundation.org](http://www.elfinforestcommunityfoundation.org)
- [www.newcoursejumps.com](http://www.newcoursejumps.com)
- [www.buenacreekgardens.com](http://www.buenacreekgardens.com)

### ALLEA

Evelyn Alemanni 760-591-0417

[alemanni@allea.com](mailto:alemanni@allea.com)

[www.allea.com](http://www.allea.com)

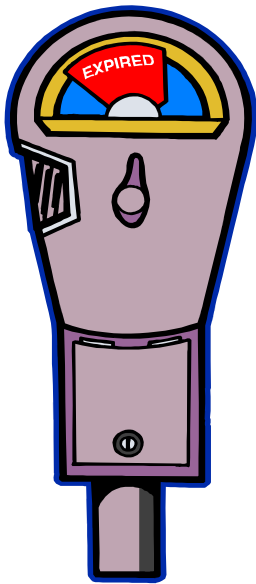


**Todd Freistat**

(760) 471-1810 • Pgr (760) 809-5805  
Fax (760) 471-1299

7711 Camino Sereno • Escondido, CA 92029

exp 6/04



## Newsletter Subscription Expired??

Please check the mail label on the front of this month's Chaparral to see if your newsletter subscription has expired!

If you need to renew your Chaparral subscription please send your check, made out to the EF/HG Town Council, to

7101 Circa De Media, Escondido, CA 92029 or drop your check off at the Fire Department and put it in the Town Council's box.

While you're at it, please make sure that Karen has your e-mail address in order that you receive com-

munity alerts. Many in the community have changed their e-mail address and the alerts have been bouncing back.

Karen@vintagematerialism.com

*By Karen Gardner*

## Chaparral Advertising

**Please support our advertisers!** Many of them are your friends and neighbors. **Consider advertising your business here.** Along with subscription fees, ads help make this newsletter possible and let the community know of the many wonderful businesses and services available.

To renew your advertis-

ing, send a JPG format file and a check (see rates below) payable to the Elfin Forest/Harmony Grove Town Council, 7101 Circa De Media, Elfin Forest, CA. 92029.

**One-time rates:**

**Yearly rates:**

1" x 3.5" \$5.00 or \$36.00/year  
 2" x 3.5" \$7.50 or \$55.00/year

5" x 3.5" \$12.00 or \$115.00/year  
 1/2 page \$20.00 or \$165.00/year

**Community, Non-Commercial Classified Ads:**

1" x 3 1/2" (approx. 4 lines): no charge to residents - must be resubmitted every 3 months. Non-residents cost is \$10/month.

### Chaparral by e-Mail

If you're not already receiving a full color, PDF format copy of the *chaparral* by email send an email to Karen@vintagematerialism.com to be added to the list. The PDF version is free to regular "hardcopy" subscribers and \$10.00/year for the PDF version only.

## September Calendar

| Date                       | Time    | Event                             |
|----------------------------|---------|-----------------------------------|
| Every Tuesday and Thursday | 6:00 AM | Free Exercise Classes @ Firehouse |
| Tues 9/4, 9/18             | 7:00 PM | Fire Training @ Firehouse         |
| Mon 9/10                   | 7:00 PM | Fire Board @ Firehouse            |
| Sat 9/15                   | 8:00 AM | Fire Training @ Firehouse         |

## West Nile Virus Update

San Diego Vector Control officials announced that 10 birds in various parts of the county tested positive for West Nile Virus, bringing the county's total to 19 birds this year.

Among the most recent cases of bird deaths were two Western scrub jays and eight American crows found in Bonita, El Cajon, Lemon Grove, Mira Mesa, Pacific Beach, Santee and Tiersanta.

While there have been no human cases of West Nile virus reported in San Diego County, five people in California have died from complications associated with West Nile virus this year. Another 108 people in the state have become ill

from the disease.

West Nile virus is spread by the bite of infected mosquitoes. Most infected people will not experience any visible symptoms, but serious cases can result in a neuroinvasive disease or complications that can lead to paralysis, coma and even death. To prevent the virus:

- Wear insect repellent containing DEET, Picaridin or Oil of Lemon Eucalyptus.
- Wear long sleeves and long pants when outside, especially at dawn and dusk.
- Maintain windows and screens to keep mosquitoes from entering your home.
- Eliminate mosquito

breeding sites around your home, and use mosquito eating fish in unused swimming pools, ponds and fountains.

To report dead birds or mosquito breeding sites, call County Vector Control at (888) 551-INFO (4636), or visit the County's West Nile virus Web site at [www.SDFightTheBite.com](http://www.SDFightTheBite.com). The public is encouraged to report dead crows, ravens, jays, hawks and owls if they meet the following criteria for testing: dead for less than 24 hours, does not have a foul odor, is not covered with ants or flies, is not stiff; body is intact and has not been hit by a car, has not been shot or killed by animals.



**West Nile virus (WNV) is a virus of the family *Flaviviridae*; part of the Japanese encephalitis (JE) antigenic complex of viruses, it is found in both tropical and temperate regions. It mainly infects birds, but is known to infect humans, horses, dogs, cats, bats, chipmunks, skunks, squirrels, and domestic rabbits. The main route of human infection is through the bite of an infected mosquito.**



**The Next Time You Leave Home, Your Pet Doesn't Have To.**

**Janean & Bill Huston**

PHONE: **760.738.8822**

1023 Country Club Drive  
Escondido, CA 92029

www.houndstohorses.com exp. 4/07

**Insured, Bonded, Member of Pet Sitters International**

**Clinical Psychologist with Office in Elfin Forest**

|  |  |
|--|--|
| <p><b>TRAYCE HANSEN, Ph.D.</b><br/> <i>Licensed Clinical Psychologist<br/>                     PSY 16380</i></p> | <p><i>Specializing in Adults &amp; Couples</i></p> <p>19969 Elfin Forest Lane<br/>                     Elfin Forest, California 92029<br/>                     Telephone 760-522-2720<br/>                     trayce@drtraycehansen.com</p> |
|--|--|



# Sue Hill

"Elfin Forest Specialist"

**760-744-3430**

suehill@prusd.com



**Prudential  
California Realty**

## **Marketing exceptional properties exceptionally well!**

Elfin Forest Resident for 25 years  
North County Real Estate Professional for 19 years  
Supporter of Elfin Forest Fire Department, Town  
Council & Community Events

*Listing & Selling more Elfin Forest  
properties than the competition!*



For more information on this and other  
Elfin Forest properties, call Sue!



**COMMERCIAL REAL ESTATE SERVICES**  
**Sales • Leasing • Management • Construction**

Whether you require a commercial property for sale, lease, purchase,  
property management, or commercial construction, please contact  
Dubs and Company, Inc. We strive to provide the unparalleled  
expertise, service, and the attention to detail that you deserve.

**Notary service is now available at our office.**

***•Elfin Forest Residents•***

Kenneth P. Dubs, Sr., CCIM

Debra A. Dubs, GRI

Kenneth P. Dubs, Jr.

Deanna K. Dubs, CA Notary Public

Alex Rager

Kurt Bueche

***“Your smallest requirement is our biggest concern.”***

1850 Diamond Street, Suite 105

**(760) 591-4100**

San Marcos, CA 92078

www.dubsandcompany.com

## Classifieds

### Local Baby, Animal and House Sitters

Ryan Anderson - Baby Sitting/Pet Care. High school sophomore, responsible, with own transportation. 760-471-5850.

Elissa Benjamin - Babysitter and tutor for grades K-4, all subjects. Local references. cannot tutor on Mondays, Tuesdays or Wednesdays. Red Cross babysitter certification. Please call early to reserve babysitting. 760-891-9061.

Amanda Clerke – Experienced Babysitter/Pet Care. Elfin Forest resident, RSF School. YMCA babysitter certification. 13 years old. Please call 760-510-0143.

Jessica MacKinnon - Babysitting/Feed Animals, EF Resident, 15 years old, SFC High School - 10th grade, took babysitting course through Red Cross. Contact at 760-744-8955.

### For Rent

Downstairs Elfin Forest apartment available. 1800 square feet. 2 bedrooms, 1 bath, small kitchenette. Large patio with views of RSF and direct access to horse facility. Escondido school district. Call Rachel 760-471-4300.

### Lessons

Learn to surf this summer, private lessons for you or your kids. I'll meet you at you favorite beach at your convenience. 1 hour lesson—\$20.00 per surfer. Call Riley Stephenson your new surf instructor. (760) 744-7744.

## Sheriff Department Contacts

In an emergency, please call 911.

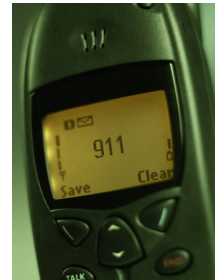
For non-emergency reporting, contact the following:

**General** - 760-510-5200

**Agriculture crime prevention specialist** (Jackie Cruz ) - 760-940-4350

**Crime Prevention Specialist/Neighborhood Watch** (Betty (B.J.) Williams) - 760-510-5254

San Marcos Patrol Station:  
182 Santar Place  
San Marcos, CA 92069



**Elfin Forest/Harmony Grove Town Council Board members: Eric Anderson 471-1464, Steve Barker 471-5559, Jacqueline Arsivaud-Benjamin 891-9061, Melanie Fallon 744-7090, Gordon Fines 291-1129, Mid Hoppenrath 747-1145, Betsy Keithley 471-8515, John Phillips 744-9500, Jeff Swenerton 471-4312**

The *chaparral* is published *monthly* by the Elfin Forest/Harmony Grove Town Council Board (a 501c3 non-profit corporation) and is distributed to residents of the Elfin Forest and Harmony Grove communities and elsewhere for a \$20.00 annual subscription. Check the mailing label for your subscription expiration date. If it has expired please send a check, payable to the Elfin Forest/Harmony Grove Town Council, to 20223 Elfin Forest Road, Elfin Forest, CA 92029. For new subscriptions or address label corrections, contact Karen Gardner at [karen@vintagematerialism.com](mailto:karen@vintagematerialism.com) or 744-9500. To protect you from unwanted junk mail and solicitations, the *chaparral* mailing list is not shared with anyone. **This newsletter is copyrighted. Unauthorized reproduction in any form is strictly prohibited.**

Articles of up to 500 words should be sent to newsletter editor Karen Gardner at [karen@vintagematerialism.com](mailto:karen@vintagematerialism.com) by the 15<sup>th</sup> of the month for inclusion in the next issue. Anonymous articles will not be published. Space limitations may cause articles to be held over to the next issue or edited for brevity. Articles considered unsuitable for publication will not be published.